

3" Type 'C' Flanged Body RESET RELIEF VALVE

Available with 1002 & 1502 end union connections

O'Drill's (Heavy duty) TYPE 'C' flanged RESET RELIEF VALVE utilizes the same mechanical principle as the Type 'B' Reset Valve. The primary difference is the sub and flanged body. The valve is designed for Hydraulic or Gas use at the following pressure ratings:

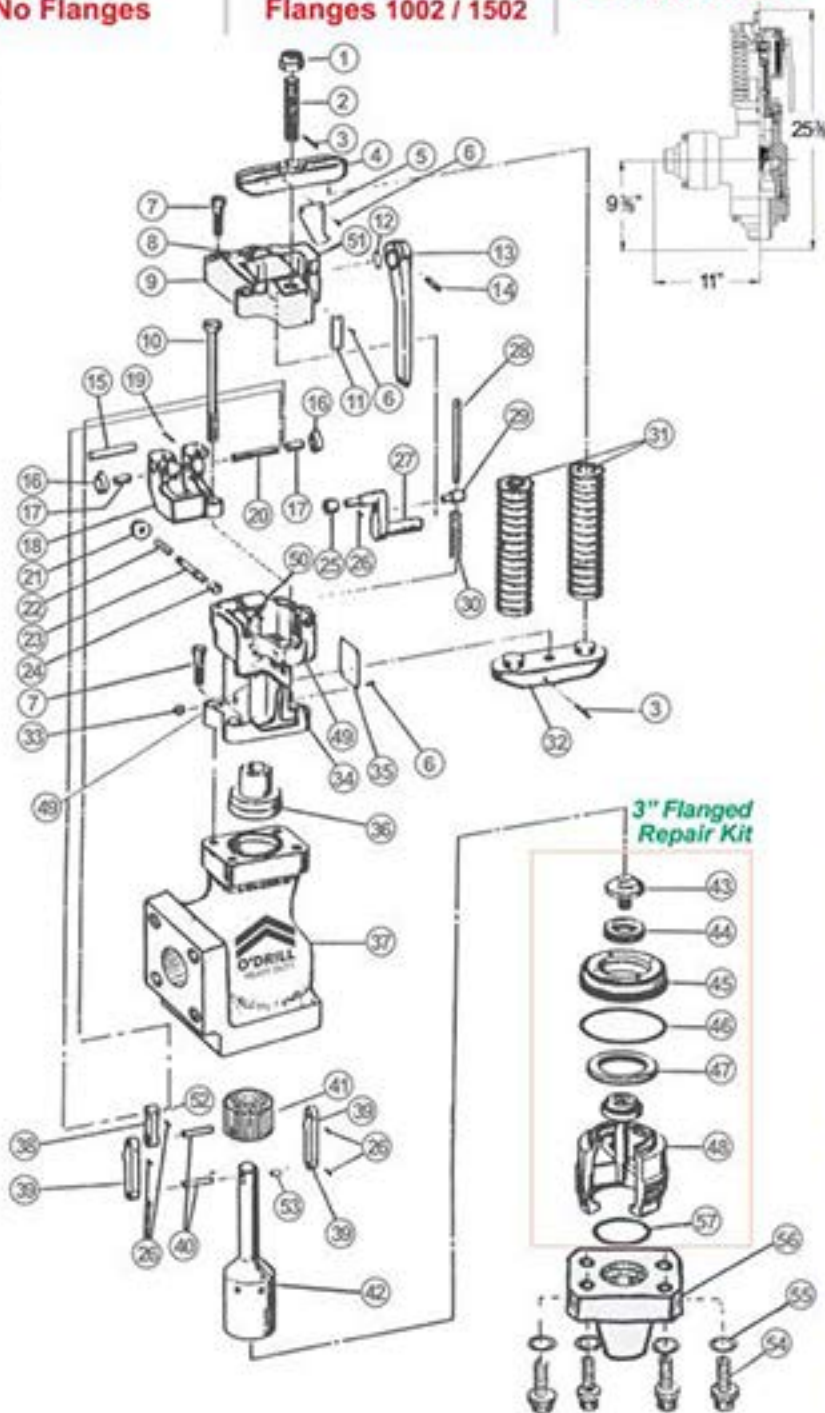
Hydraulic use: 1500 - 6200 PSI W.P. / Gas Use: 1500 - 2500 PSI W.P.

RRC 31862-030
Type "C"
No Flanges

RRC 31862-032
M x F 1502
Flanges 1002 / 1502

RRC 31862-031
Comp. Flanges

Good for
H₂S
Service



PARTS LIST

#	QTY.	DESCRIPTION	PART NO.
1	1	Nut, Elastic Stop	5953-34
2	1	Stud, Adjusting	20798
3	2	Pin, Spirol 1/4" x 1 1/2"	20712-04
4	1	Retainer, Upper Spring	30385
5	1	Indicator	30379
6	12	Screw, Self Tap	2975-03
7	8	Screw, Socket-Head Cap	204044-10-00-14
8	1	Plate, Name	30170
9	1	Assy. Cover	38159
10	1	Screw, Load	30389
11	1	Plate, Calibration	21048
12	1	O-Ring	6227-15-01-70
13	1	Handle, Reset	30377
14	1	Pin Spirol 5/16" x 1 3/8"	20712-13
15	1	Pin, Crank Pivot	30381
16	2	Spring, Reset	20791
17	2	Bearing, Crank Assy.	13229-13
18	1	Crank Assy.	38161
19	1	Pin Spirol 1/8" x 7/8"	20712-03
20	1	Pin, Top Crank	20802
21	1	Button, Release	30396
22	1	Spring Button Release	30390
23	1	Shaft Release	30397
24	1	Bushing, Release Button	30368
25	1	Roller, Reset Crank	30388
26	7	Pin Spirol 1/8" x 5/8"	20712-02
27	1	Crank, Reset	30373
28	1	Rod, Spring Guide	30387
29	1	Keeper, Spring	30380
30	1	Spring, Reset Crank	30391
31	2	Spring, Load	20805-01
32	1	Retainer, Lower Spring	30382
33	1	Fitting, Grease	5929-02
34	1	Sub Assy. Bonnet	38160
35	1	Plate, Instruction	30178
36	1	Bushing, Stem	30828
37	1	Body	31858
38	1	Link, Upper	31977
39	2	Link, Lower	20786
40	2	Pin, Lower	23545
41	1	Ring, Cushion	31860
42	1	Piston	30829
43	1	Retainer, Inner	30826
44	1	Seal, Inner	30831
45	1	Retainer, Outer	30827
46	1	O-Ring (sub to body)	702640-24-31
47	1	Seal, Outer	30833
48	1	Sub	31861
49	1	Plug, Grease	20750
50	2	Bearing, bonnet	13229-08
51	1	Bearing, cover	13229-12
52	1	Bearing, Upper link	13229-14
53	1	Bearing, Piston	13229-10
54	8	Screws (flange)	111676
55	8	Washer, Lock	111680
56	2	Flange, 4 Bolt	31852
57	2	O-Ring, flange	702640-23-71

100% Interchangeable with Cameron® and Retso® R. R. Valves & Parts.

Note: O'Drill can rebuild your damaged Type 'B' & 'C' Reset Valves to a brand new condition for a very nominal cost.

O'Drill/MCM, Inc.

5055 Cranswick Rd. • Houston, Texas 77041
Office: (713) 541.2020 / Fax: (713) 541.9090 / 1.800.255.6263

Website: www.odrillmcm.com
email: sales@odrillmcm.com

